

AT OIL TEMP Warning Light Display

CONTINUOUSLY VARIABLE TRANSMISSION (DIAGNOSTICS)

13.AT OIL TEMP Warning Light Display

A: OPERATION

The AT OIL TEMP light illuminates or blinks, when the ATF temperature is high and malfunction occurs in CVT.

- At normal condition

After turning the ignition switch to ON, illuminates for 2 seconds then goes off.

- When ATF temperature is high

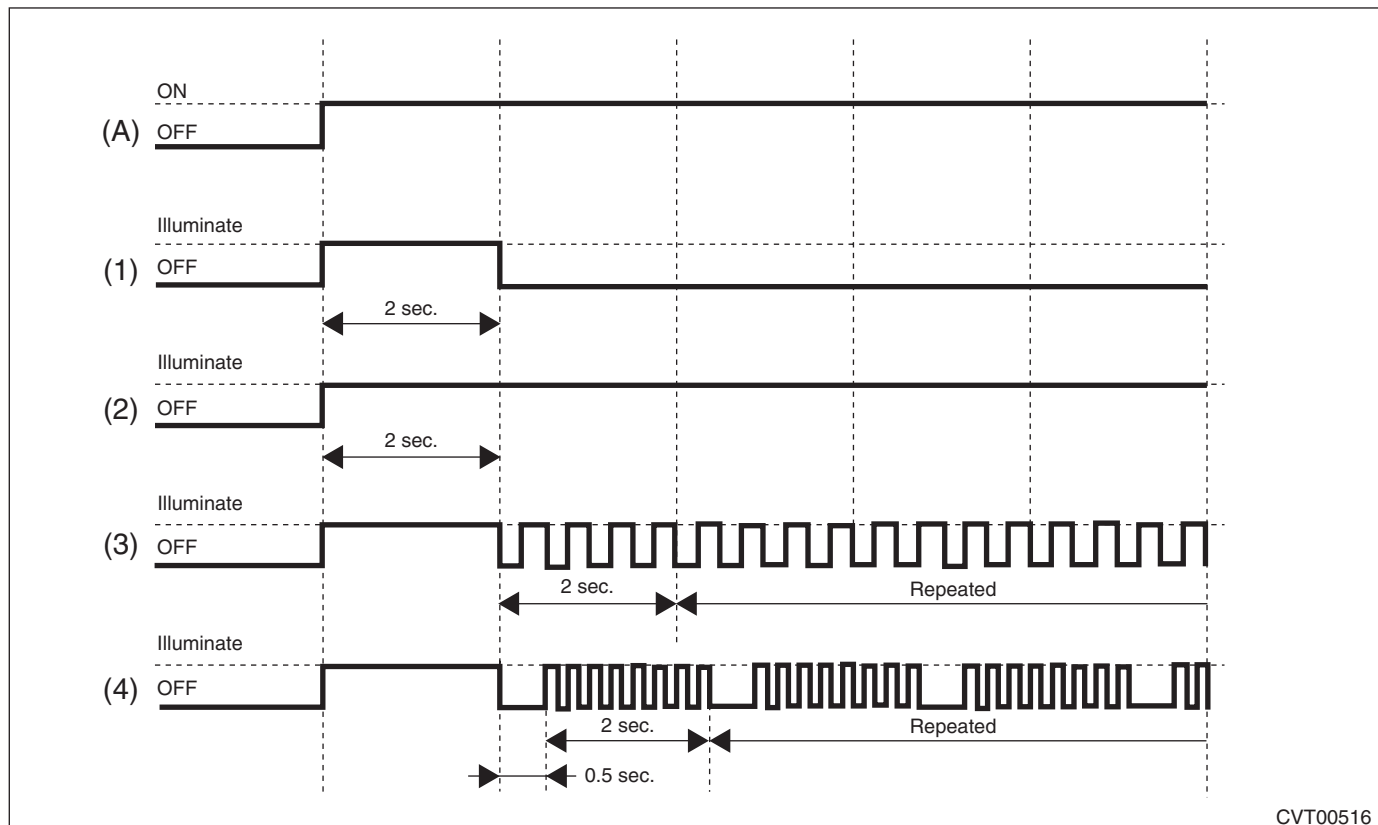
AT OIL TEMP light illuminates when the ATF temperature is abnormally high with the ignition switch ON.

- When malfunction is detected

AT OIL TEMP light blinks at 2 Hz when the TCM detects the malfunction of CVT with the ignition switch ON. In this case, inspect using “Diagnostic Procedure with Diagnostic Trouble Code (DTC)”. <Ref. to CVT(w/o HEV)(diag)-39, Diagnostic Procedure with Diagnostic Trouble Code (DTC).>

- When AT learning is not finished

AT OIL TEMP light repeats “Blinking at 4 Hz → Turning OFF” every two seconds, when the AT learning is not completed with the ignition switch ON. In this case, perform the “Learning”. (During AT learning, the light blinks at 2 Hz or illuminates.) <Ref. to CVT(w/o HEV)(diag)-25, Learning Control.>



CVT00516

(A) Ignition switch condition

(1) At normal condition

(3) When malfunction is detected

(4) When AT learning is not finished

(2) When ATF temperature is high

If the AT OIL TEMP light does not illuminate, or illumination patterns are not as above, check the AT OIL TEMP light circuit. <Ref. to CVT(w/o HEV)(diag)-28, INSPECTION, AT OIL TEMP Warning Light Display.>

AT OIL TEMP Warning Light Display

CONTINUOUSLY VARIABLE TRANSMISSION (DIAGNOSTICS)

B: INSPECTION

DIAGNOSIS:

- CAN communication is lost with the combination meter.
- Combination meter malfunction
- TCM is in special control mode.
- AT learning is not finished.

TROUBLE SYMPTOM:

- When the ignition switch is turned to ON, the AT OIL TEMP light does not illuminate.
- AT OIL TEMP light remains lit after engine start.

	Step	Check	Yes	No
1	CHECK DTC. Read the DTC relating the TCM using the Subaru Select Monitor.	Is DTC U0155 or U0423 displayed?	Perform the self-diagnosis of combination meter.	Go to step 2.
2	CHECK DTC. Read the DTC relating the TCM using the Subaru Select Monitor.	Are DTCs other than U0155 and U0423 displayed?	Perform the diagnosis according to DTC.	Go to step 3.
3	CHECK COMBINATION METER. Read DTC of combination meter.	Is DTC displayed?	Perform the diagnosis according to DTC.	Go to step 4.
4	CHECK AT OIL TEMP LIGHT. Turn the ignition switch to ON.	Does AT OIL TEMP light illuminate and then go off in 2 seconds?	Go to step 5.	Perform the self-diagnosis of combination meter. <Ref. to IDI-8, SELF-DIAGNOSIS DISPLAY MODE, OPERATION, Combination Meter System.>
5	CHECK AT OIL TEMP LIGHT. Start the engine.	Does the AT OIL TEMP light go off?	Current condition is normal. Go back to Basic Diagnostic Procedure. <Ref. to CVT(w/o HEV)(diag)-2, Basic Diagnostic Procedure.>	Go to step 6.
6	CHECK DTC. Read the DTC relating the TCM using the Subaru Select Monitor.	Is DTC displayed?	Perform the diagnosis according to DTC.	Go to step 7.
7	CHECK TCM. Read the data of «ATF Temperature Lamp» using the Subaru Select Monitor.	Is «ON» displayed?	Go to step 8.	Perform the self-diagnosis of combination meter. <Ref. to IDI-8, SELF-DIAGNOSIS DISPLAY MODE, OPERATION, Combination Meter System.>
8	CHECK TCM. Read the data of «ATF Temp.» using the Subaru Select Monitor.	Is the display 125°C or more?	Go to step 9.	Replace the TCM. <Ref. to CVT(TR580)-146, Transmission Control Module (TCM).>

AT OIL TEMP Warning Light Display

CONTINUOUSLY VARIABLE TRANSMISSION (DIAGNOSTICS)

Step		Check	Yes	No
9	CHECK ATF TEMPERATURE. Check the real fluid temperature from the transmission case surface temperature.	Does it clearly differ from the «ATF Temp.» displayed on Subaru Select Monitor?	Perform the diagnosis according to DTC P0712. If there is no problem, perform the diagnosis according to DTC P0713.	When ATF temperature can be judged as actually high, perform the diagnosis again after the ATF temperature lowers.